



IN THE COURTS OF THE FOURTEENTH JUDICIAL CIRCUIT
Bay, Calhoun, Gulf, Holmes, Jackson and Washington Counties
THE STATE OF FLORIDA

ADMINISTRATIVE ORDER # 2018-00-04
(Rescinding Administrative Order #2017-00-01)

**RE: CIRCUIT JUDGE ASSIGNMENT PLAN BEGINNING JANUARY 1, 2019,
AND SHALL REMAIN IN EFFECT UNTIL FURTHER ORDER**

Whereas, Rule 2.215(b)(2), Florida Rules of Judicial Administration, establishes that the chief judge of a circuit "shall exercise administrative supervision over all courts within the judicial circuit."

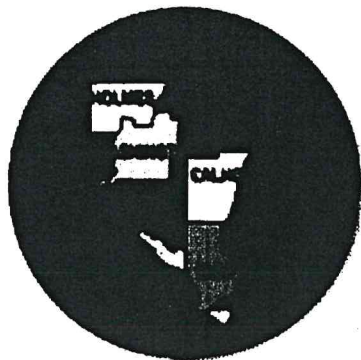
Whereas, Rule 2.215(b)(4), Florida Rules of Judicial Administration, allows the chief judge to assign judges to courts and divisions and determine length of each assignment. It also allows the chief judge to assign any judge to temporary service for which the judge is qualified in any court in the same circuit; and

Whereas, Rule 2.215(b)(3), Florida Rules of Judicial Administration, directs the chief judge to develop an administrative plan for the efficient and proper administration of all courts within the circuit.

Now, Therefore, IT IS ORDERED and ADJUDGED that the circuit court judicial assignments as reflected on Attachment #1 is incorporated herein and shall be in effect from January 1, 2019 until rescinded or amended by further order of the court.

DONE AND ORDERED in Chambers, at Panama City, Bay County, this 13th day of September 2018.


ELIJAH SMILEY, CHIEF JUDGE



FOURTEENTH JUDICIAL CIRCUIT

Serving Bay, Calhoun, Gulf, Holmes, Jackson, and Washington Counties

ASSIGNMENT PLAN

for

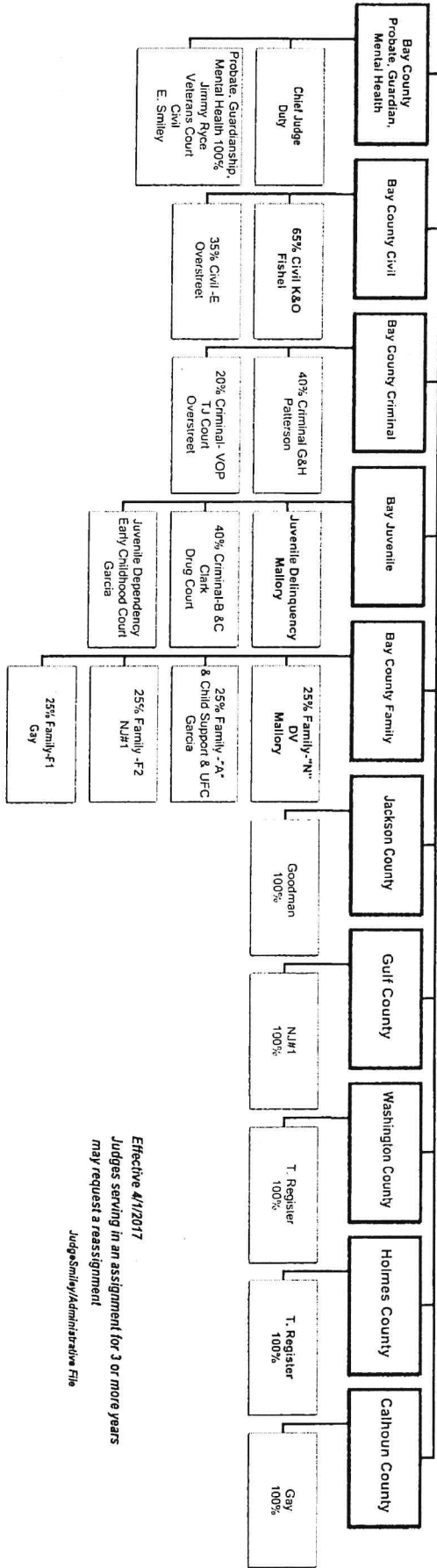
January 1, 2019 - December 31, 2020

unless modified by order of the court

Our Vision: Justice in Florida will be Accessible, Fair, Effective, Responsive, and Accountable

14th Judicial Circuit Judge Assignments Effective, January 1, 2019 - December 31, 2020 <small>unless modified by order of the court</small>		Attachment #1
Designated Office Headquarters	Assignments	Parking
1. Bay County Main Courthouse Overstreet Administrative Civil Judge	Bay County Circuit Criminal (20% of the total identified criminal cases) Bay County Circuit Civil Proceedings (35% of the total identified civil cases) TJC Court	Bay Main #1
2. Bay Main Courthouse Clark Administrative Criminal Judge	Bay County Circuit Criminal Division B & C (40% of the total identified criminal cases) Drug Court	Bay Main #3
3. Bay Main Courthouse Smiley Administrative Probate Judge	Bay County Probate, Guardianship, & Mental Health (100% of the identified cases) Bay County Jimmy Ryce cases (100% of the identified cases) Civil & Veterans Court Chief Judge Duties	Bay Main #4
4. Bay Main Courthouse Fishe	Bay County Circuit Civil Proceedings (65% of the total identified civil cases)	Bay Main #2
5. Bay Main Courthouse Patterson	Bay County Circuit Criminal Divisions G & H (40% of the total identified criminal cases)	Bay Main #8
6. Bay Juvenile Courthouse Mallory Administrative Juvenile Judge	Bay County Delinquency Cases and Detention Hearings (100% of the identified cases) Bay County Injunctions for Protection Hearings (100% of the identified cases) Bay County Domestic Relations 25% of identified cases	Bay Juvenile Reserved
7. Bay Main Courthouse Gay	Calhoun County Circuit Proceedings (100% of the identified cases) Bay County Domestic Relations 25% of identified cases	Bay Main #7
8. Washington County Courthouse Register	Washington County Circuit Proceedings (100% of the identified cases) Holmes County Circuit Proceedings (100% of the identified cases)	Washington County Reserved
9. Bay County Juvenile Courthouse Garcia	Bay County Domestic Relations Cases (25% of the total identified cases) Bay County Contested and Non-Title IV-D Child Support Proceedings and Shelter Hearing (100% of cases) Bay County Dependency and Truancy & Infant Court	Bay Juvenile Reserved
10. Jackson County Courthouse Goodman Administrative Criminal Judge for Outer Counties	Jackson County Circuit Proceedings (100% of the identified cases)	Jackson County Reserved
11. Bay Main Courthouse New Judge	Gulf County Circuit Proceedings (100% of the identified cases) Bay County Domestic Relations Cases (25 % of the total identified cases)	Bay Main #9

14th Judicial Circuit Assignments
January 1, 2019 - December 31, 2020



*Effective 4/1/2017
Judges serving in an assignment for 3 or more years
may request a reassignment
Judge Smiley/Administrative File*

	<p>Judge Elijah Smiley Chief Judge January 1, 2019 - December 31, 2020 Administrative Assignments</p>
	<p>Judge Michael Overstreet Administrative Civil Judge</p>
	<p>Judge Brantley Clark Administrative Criminal</p>
	<p>Judge Peter Mallory Administrative Juvenile Judge</p>
	<p>Judge Shonna Gay Administrative Family Judge</p>
	<p>Judge Jeff Goodman Administrative Criminal Judge for Jackson, Holmes, Gulf, Washington, & Calhoun Counties</p>
	<p>Judge Tim Campbell Administrative Judge Bay County Court</p>



A CERTIFIED TRUE COPY
BILL KINSAUL CLERK
OF THE CIRCUIT COURT

By *Bill Kincaul*
Deputy Clerk